

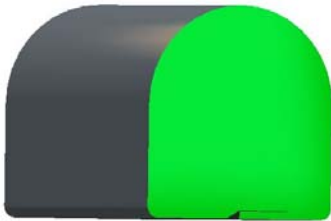


SCHLEGEL
 electronic materials
 a member of **EMEI Group**

| Revisions | | | |
|-----------|---------------------------|-----------|-----|
| Lev | Description | Date | By |
| Ⓐ | Initial Release | 9.Dec.11 | LWD |
| Ⓑ | Changed the width of tape | 19.Jul.17 | Leo |
| Ⓒ | | | |

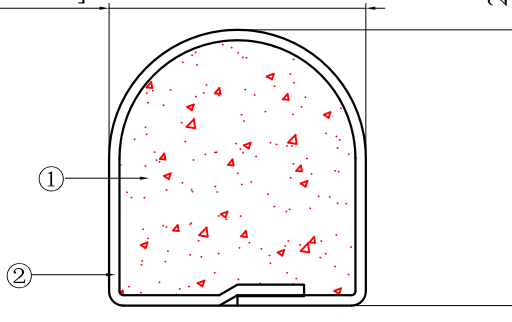
SEM FE DIVISION PRODUCT PRINT

The information disclosed on this drawing is confidential and the property of Schlegel Electronic Materials, Inc. The use, disclosure, or reproduction of this information and related know-how is prohibited without written permission from Schlegel Electronic Materials, Inc.



2.70±0.38[0.106±0.015]

2.90±0.38[0.114±0.015]



TOLERANCES
 Profile thickness: ±.015"(0.38mm)
 Profile width: ±.015"(0.38mm)

| | | | |
|----------------------------------------------------------------------------------------|----------------------|-------------------|--------------------------------|
| | ④ | | |
| | ③ | | |
| DECIMAL DIMENSIONS ± _____ UNLESS OTHERWISE SPECIFIED ALL DIMENSIONS IN MM[INCH] | ② | SEE B.O.M. | CONDUCTIVE FABRIC |
| Date: 19.Jul.2017 | ① | SEE B.O.M. | URETHANE FOAM |
| Sheet 1 of 2 | Item | R.M. Number | Material Description |
| Drawn Scale: 1:1 | Approved: | Drawn: | Title: 2.7mmx2.9mm D-SHAPE EMI |
| Cad File No. DC3E48791 | Part No. EY1xxXxxxxx | Dwg. No. DC3E4879 | Rev. B |



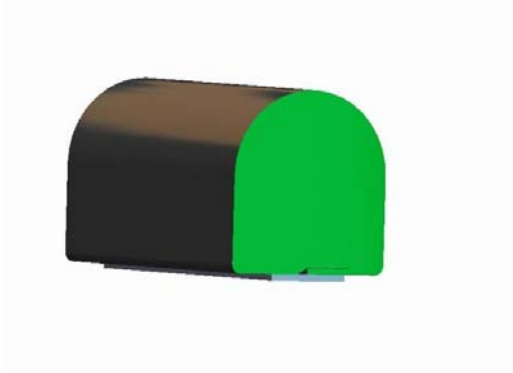
SCHLEGEL
 electronic materials
 a member of **EMEI Group**

Revisions

| Lev | Description | Date | By |
|-----|---------------------------|-----------|-----|
| Ⓐ | Initial Release | 9.Dec.11 | LWD |
| Ⓑ | Changed the width of tape | 19.Jul.17 | Leo |
| Ⓒ | | | |

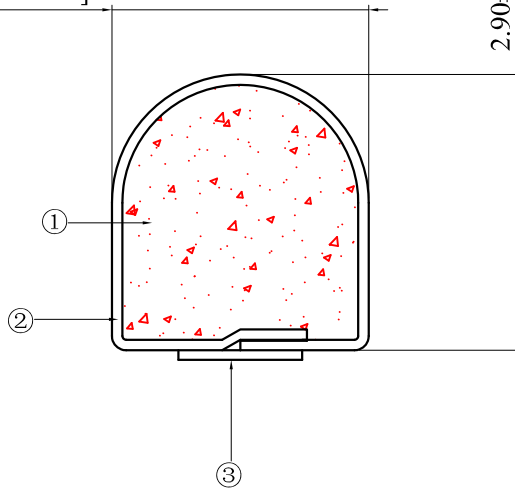
SEM FE DIVISION PRODUCT PRINT

The Information disclosed on this drawing is confidential and the property of Schlegel Electronic Materials, Inc. The use, disclosure, or reproduction of this information and related know-how is prohibited without written permission from Schlegel Electronic Materials, Inc.



2.70±0.38[0.106±0.015]

2.90±0.38[0.114±0.015]



TOLERANCES
 Profile thickness: ±.015"(0.38mm)
 Profile width: ±.015"(0.38mm)

| | | | |
|----------------------------------------------------------------------------------------|----------------------|-------------------|-----------------------------------------------|
| | ④ | | |
| DECIMAL DIMENSIONS ± _____ UNLESS OTHERWISE SPECIFIED ALL DIMENSIONS IN MM[INCH] | ③ | SEE B.O.M. | PSA.0.050" WIDE (UNLESS OTHER WISE SPECIFIED) |
| | ② | SEE B.O.M. | CONDUCTIVE FABRIC |
| | ① | SEE B.O.M. | URETHANE FOAM |
| Date: 19.Jul.2017 | Item | R.M. Number | Material Description |
| Sheet 2 of 2 | | | |
| Drawn Scale: 1:1 | Approved: | Drawn: | Title: 2.7mmx2.9mm D-SHAPE EMI |
| Cad File No. DC3E48791 | Part No. EY1xxTxxxxx | Dwg. No. DC3E4879 | Rev. B |